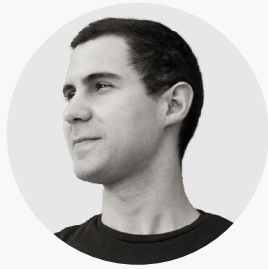


Architecture

Selected Works

João Pedro Gonçalves

joaopedrogoncalves.com



João Pedro Gonçalves



@goncalvesjpedro

mobile

+44 (0) 7708 333224

email

hello@joaopedrogoncalves.com

website

joaopedrogoncalves.com

nacionality

Portuguese

birthday

05 July 1992

Registered Architect No. 25973

(Ordem dos Arquitetos – Portugal)

Education

Master of Architecture

University of Lisbon – Faculty of Architecture
Lisbon, Portugal

September 2010 – July 2017

Master Thesis

Design thinking in Lisbon
A building as a strategy for an industry

July 2017

Experience

July 2018 – now

ModaLisboa – Lisbon Fashion Week

Digital Consultant

Lisbon, Portugal

October 2017 – now

FSSMGN Arquitectos

Architect

Lisbon, Portugal

October 2014 – October 2017

ModaLisboa – Lisbon Fashion Week

Graphic Designer

Lisbon, Portugal

January 2013 – January 2018

theGentleman.pt

Lifestyle portuguese website

Co-founder & Project Designer

Lisbon, Portugal

June 2016 – March 2017

Boldplaces

Startup of short term rentals

for events and workspaces

CPO

Lisbon, Portugal

ARCHITECTURE CONTESTS

2014

120hours – Oya Festival Oslo

2014

Pladur XXIV Ed., Madrid

2018

National Museum of Resistance
and Freedom – Peniche, Portugal

// FSSMGN Arquitectos – 2nd place

Skills

LANGUAGES

English

Portuguese (Native)

GENERAL SKILLS

Abstraction

Analysis

Architectural Rendering

Collaboration

Communication

Computer Aided Design (CAD)

Computer Processing

Conceptualization

Coordination

Design

Design Concepts

Problem Solving

Visualize

APPS (SOFTWARE)

Adobe Creative Cloud

Photoshop, InDesign, Illustrator,

Experience Design, Acrobat

AutoCAD

SketchUp Pro

ArchiCAD

Rhinoceros

Cinema 4D

Vray

Office Suite

Microsoft Office, Apple iWork, Google Docs

Sketch App

Final Cut Pro

Motion

EXPLORING

Building Information Modeling (BIM)

3D Printing

New Media

Tech & Spaces

Search for new digital tools

SOFT SKILLS

Communication Hand-draw

Architecture Modeling

Photography

Video

Digital Native

Curious

INTERESTS

Design

Technology

Communication

Media & Press

Photography & Video

Swimming

DRIVE LICENCE

Category B

Table of Contents

- 1 Design Thinking in Lisbon**
A building as a strategy for an industry
// architecture master thesis
- 2 From the Avenue to *Parque Mayer***
Qualification of the public space
// academic project
- 3 Multi-housing blocks in the city**
House Blocks in Marvila, Lisbon
// academic project
- 4 LAB A Padaria Portuguesa**
Flagship store for a bakery chain in Lisbon
// project at FSSMGN
- 5 Garden Restaurant & terrance**
Square in Lisbon heart
// project at FSSMGN
- 6 National Museum of Resistance and Freedom**
Renovation of fortress and former prison
// public competition at FSSMGN – 2nd place

architecture
master thesis

Design thinking in Lisbon

A building as a strategy
for an industry

riverfront
Lisbon
Tagus
urban regeneration
design
library
auditorium
work spaces

Perceive and debate about the increasing degradation of Lisbon's riverfront, which ever since the construction of the industrial harbour in the end of the 19th century, deeply transformed the city's physiognomy and its profound relationship with the river.

In order to re-connect the city and its river, it is crucial to evaluate and reflect about the empty spaces that emerged from these decrepit industrial sites along the riverfront, seeing them as relevant urban regeneration opportunities.

The development of a proposal that imprints its place on the riverfront and proposes a building of public relevance as an element of new dynamics in the relationship between Lisbon and Tagus – furthermore, a building that settles and enhances Lisbon in a consistently growing industry.



Chair
Design
Exhibition

LOUNGE
CHAIR



The lounge chair is a classic piece of furniture that has been designed to provide comfort and relaxation. It is often found in living rooms, bedrooms, and outdoor spaces. The chair is typically made of wood, metal, or plastic, and it can be upholstered in a variety of fabrics. The design of the chair is often simple and functional, with a focus on ergonomics and comfort.

The lounge chair is a classic piece of furniture that has been designed to provide comfort and relaxation. It is often found in living rooms, bedrooms, and outdoor spaces. The chair is typically made of wood, metal, or plastic, and it can be upholstered in a variety of fabrics. The design of the chair is often simple and functional, with a focus on ergonomics and comfort.

The lounge chair is a classic piece of furniture that has been designed to provide comfort and relaxation. It is often found in living rooms, bedrooms, and outdoor spaces. The chair is typically made of wood, metal, or plastic, and it can be upholstered in a variety of fabrics. The design of the chair is often simple and functional, with a focus on ergonomics and comfort.

The lounge chair is a classic piece of furniture that has been designed to provide comfort and relaxation. It is often found in living rooms, bedrooms, and outdoor spaces. The chair is typically made of wood, metal, or plastic, and it can be upholstered in a variety of fabrics. The design of the chair is often simple and functional, with a focus on ergonomics and comfort.

The lounge chair is a classic piece of furniture that has been designed to provide comfort and relaxation. It is often found in living rooms, bedrooms, and outdoor spaces. The chair is typically made of wood, metal, or plastic, and it can be upholstered in a variety of fabrics. The design of the chair is often simple and functional, with a focus on ergonomics and comfort.

The lounge chair is a classic piece of furniture that has been designed to provide comfort and relaxation. It is often found in living rooms, bedrooms, and outdoor spaces. The chair is typically made of wood, metal, or plastic, and it can be upholstered in a variety of fabrics. The design of the chair is often simple and functional, with a focus on ergonomics and comfort.

The lounge chair is a classic piece of furniture that has been designed to provide comfort and relaxation. It is often found in living rooms, bedrooms, and outdoor spaces. The chair is typically made of wood, metal, or plastic, and it can be upholstered in a variety of fabrics. The design of the chair is often simple and functional, with a focus on ergonomics and comfort.

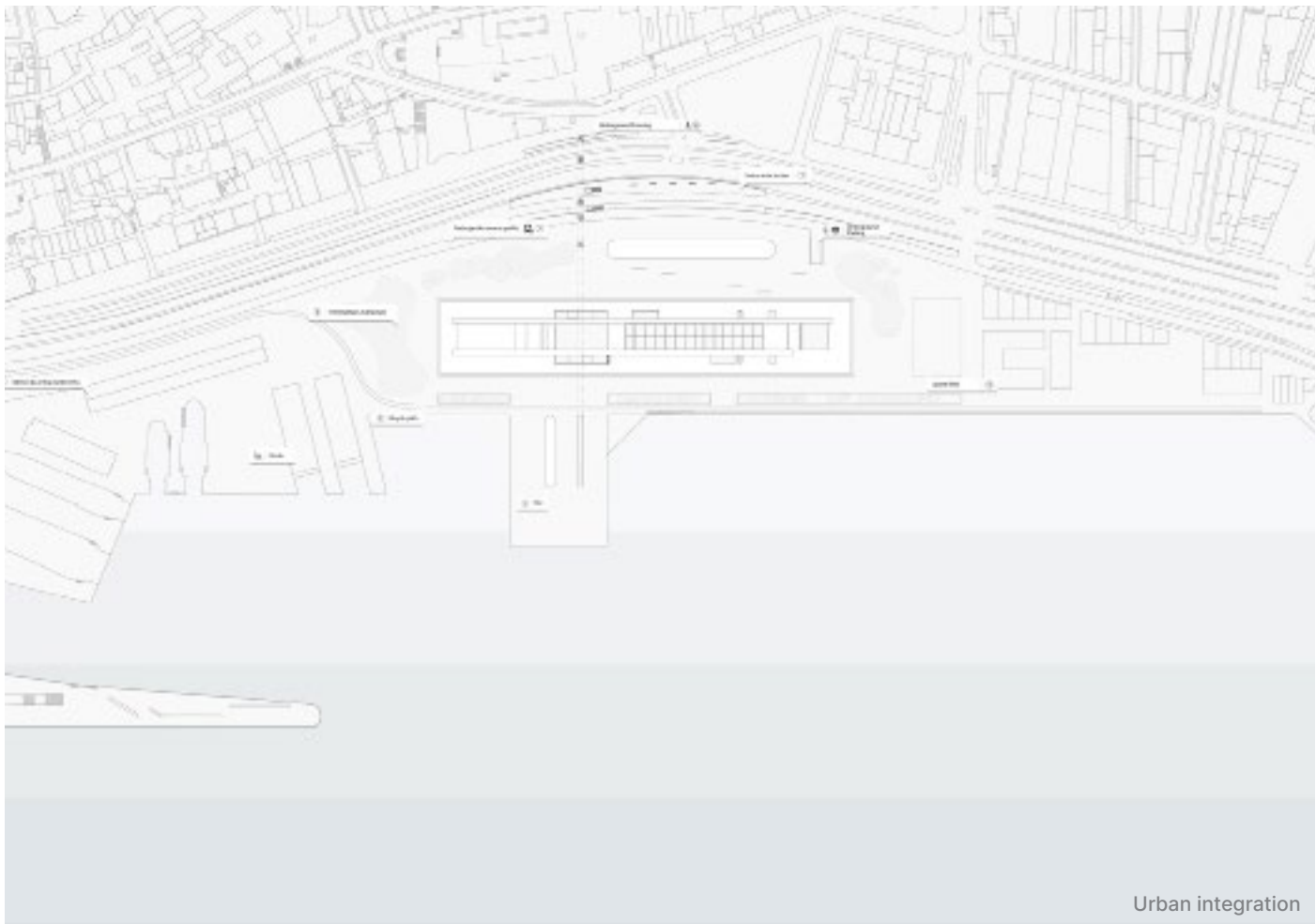
The lounge chair is a classic piece of furniture that has been designed to provide comfort and relaxation. It is often found in living rooms, bedrooms, and outdoor spaces. The chair is typically made of wood, metal, or plastic, and it can be upholstered in a variety of fabrics. The design of the chair is often simple and functional, with a focus on ergonomics and comfort.

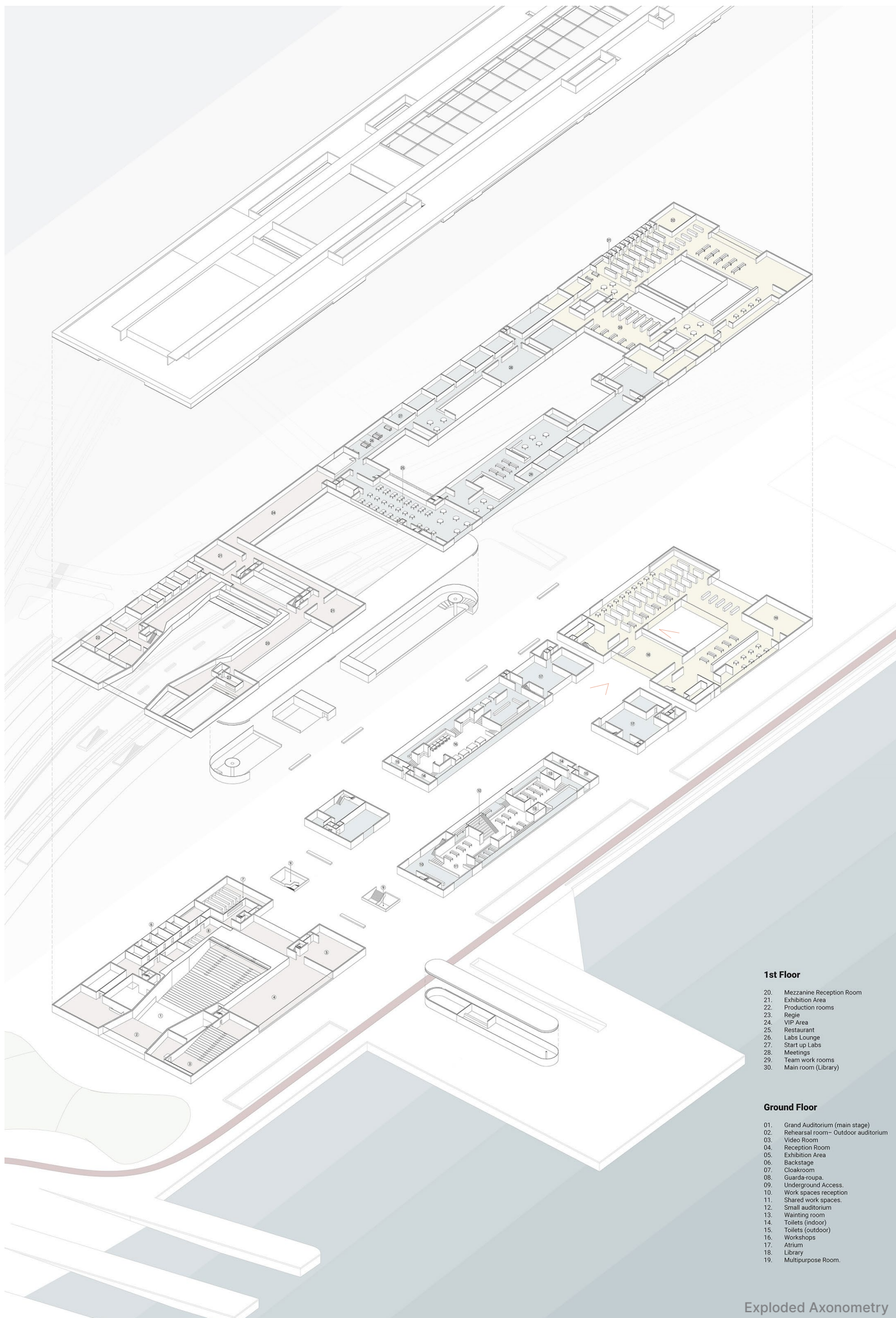
The lounge chair is a classic piece of furniture that has been designed to provide comfort and relaxation. It is often found in living rooms, bedrooms, and outdoor spaces. The chair is typically made of wood, metal, or plastic, and it can be upholstered in a variety of fabrics. The design of the chair is often simple and functional, with a focus on ergonomics and comfort.

The lounge chair is a classic piece of furniture that has been designed to provide comfort and relaxation. It is often found in living rooms, bedrooms, and outdoor spaces. The chair is typically made of wood, metal, or plastic, and it can be upholstered in a variety of fabrics. The design of the chair is often simple and functional, with a focus on ergonomics and comfort.

The lounge chair is a classic piece of furniture that has been designed to provide comfort and relaxation. It is often found in living rooms, bedrooms, and outdoor spaces. The chair is typically made of wood, metal, or plastic, and it can be upholstered in a variety of fabrics. The design of the chair is often simple and functional, with a focus on ergonomics and comfort.

The lounge chair is a classic piece of furniture that has been designed to provide comfort and relaxation. It is often found in living rooms, bedrooms, and outdoor spaces. The chair is typically made of wood, metal, or plastic, and it can be upholstered in a variety of fabrics. The design of the chair is often simple and functional, with a focus on ergonomics and comfort.



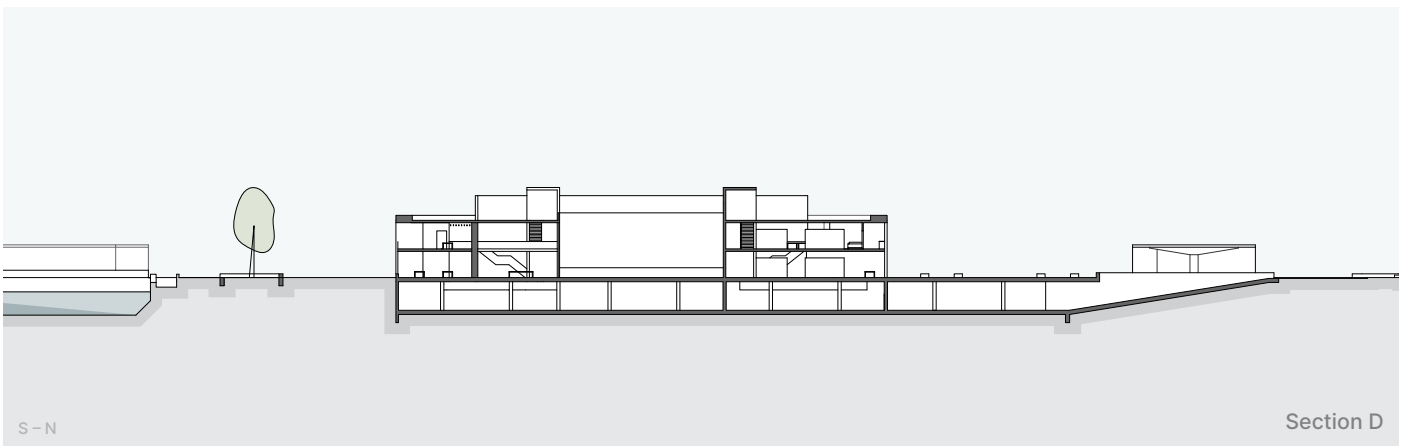
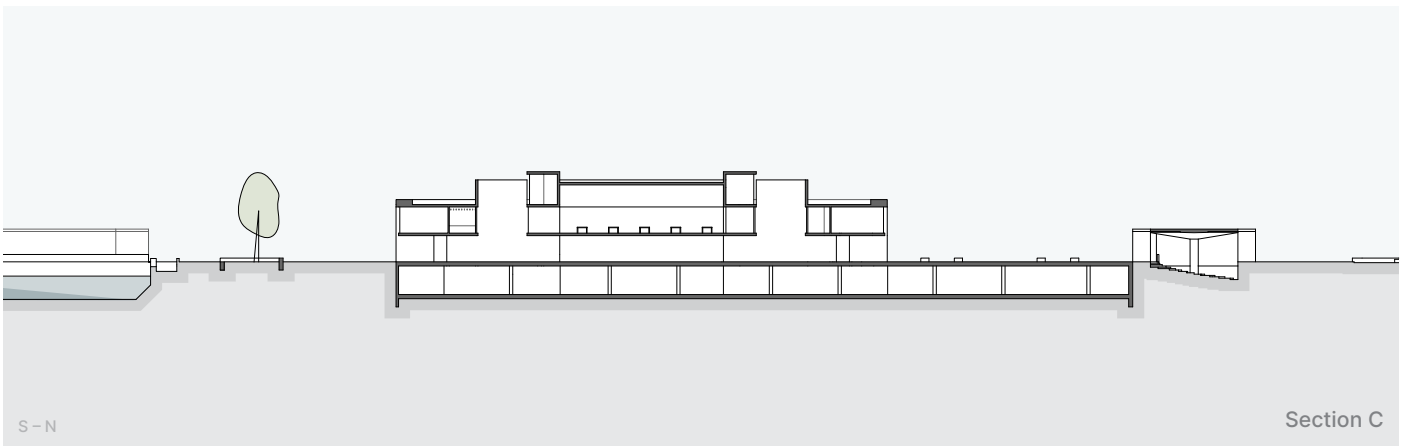
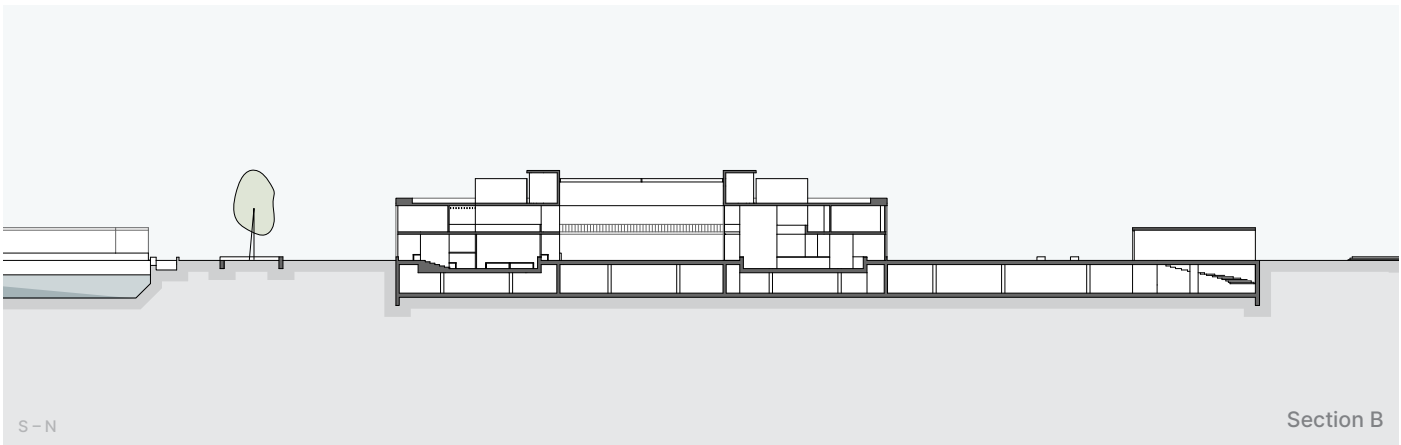
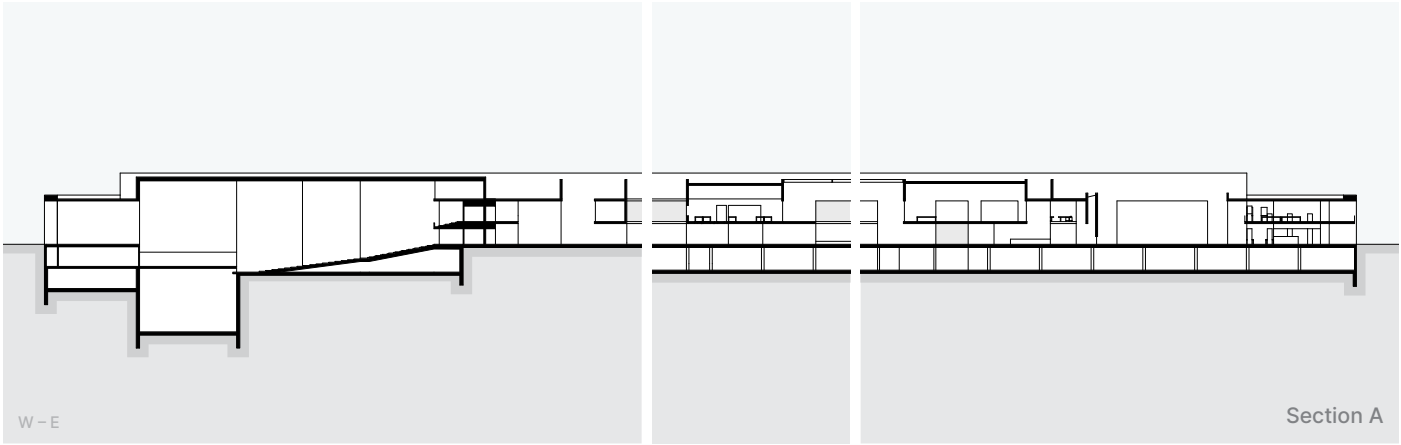


1st Floor

- 20. Mezzanine Reception Room
- 21. Exhibition Area
- 22. Production rooms
- 23. Regie
- 24. VIP Area
- 25. Restaurant
- 26. Labs Lounge
- 27. Start up Labs
- 28. Meetings
- 29. Team work rooms
- 30. Main room (Library)

Ground Floor

- 01. Grand Auditorium (main stage)
- 02. Rehearsal room- Outdoor auditorium
- 03. Video Room
- 04. Reception Room
- 05. Exhibition Area
- 06. Backstage
- 07. Cloakroom
- 08. Guarda-roupa
- 09. Underground Access
- 10. Work spaces reception
- 11. Shared work spaces
- 12. Small auditorium
- 13. Waiting room
- 14. Toilets (indoor)
- 15. Toilets (outdoor)
- 16. Workshops
- 17. Atrium
- 18. Library
- 19. Multipurpose Room





architecture
academic project

From the Avenue to *Parque Mayer*

Qualification of the
public space

The Parque Mayer, the theaters square, was an important meeting point to Lisbon society.

The renovation project for that area had as a starting point the previous project for one of the old theater buildings that gives back the space as a multipurpose event building.

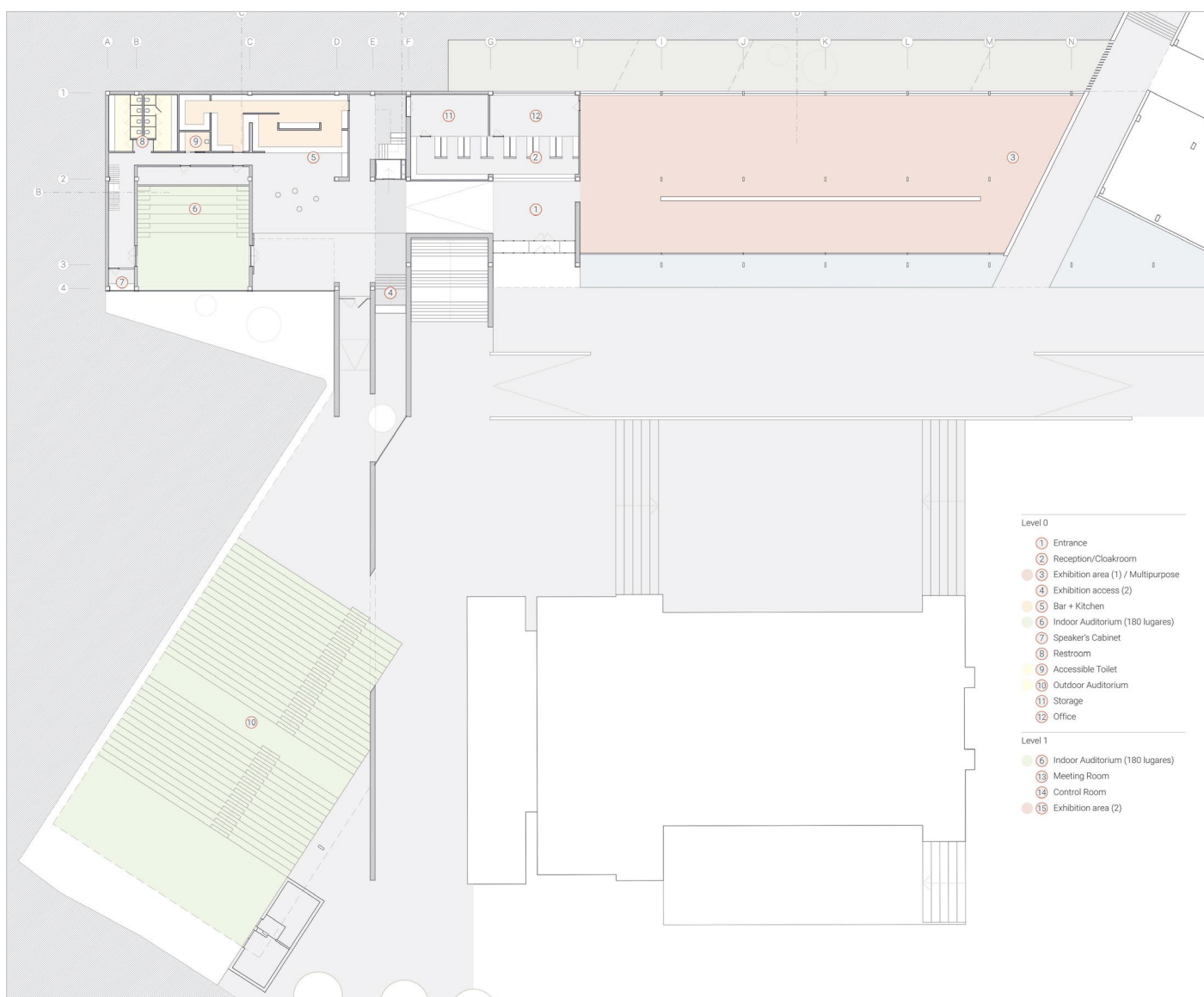
The proposal is to connect the Parque Mayer to the Liberty Avenue, one of the most noble avenues in Lisbon to give back the protagonism that was taken away by his oblivion.

The complementary buildings that surrounds the main building are exhibitions spaces, an outdoor auditorium sheltered by a big exhibition area and the retaining wall from the Lisbon Botanical Garden.

public spaces
urban regeneration
Lisbon







architecture

academic project

Multi-housing blocks in the city

House Blocks in Marvila, Lisbon

In a place left to the forgetfulness of Lisbon, where once industrial infrastructures had place, a housing project was developed that intends to be the starting point of a revisit forgotten city.

The urban proposal consists in linear buildings that conform two street fronts leaving a permeable interior space through the contact of the buildings with the ground being made using only pillars and vertical accesses.

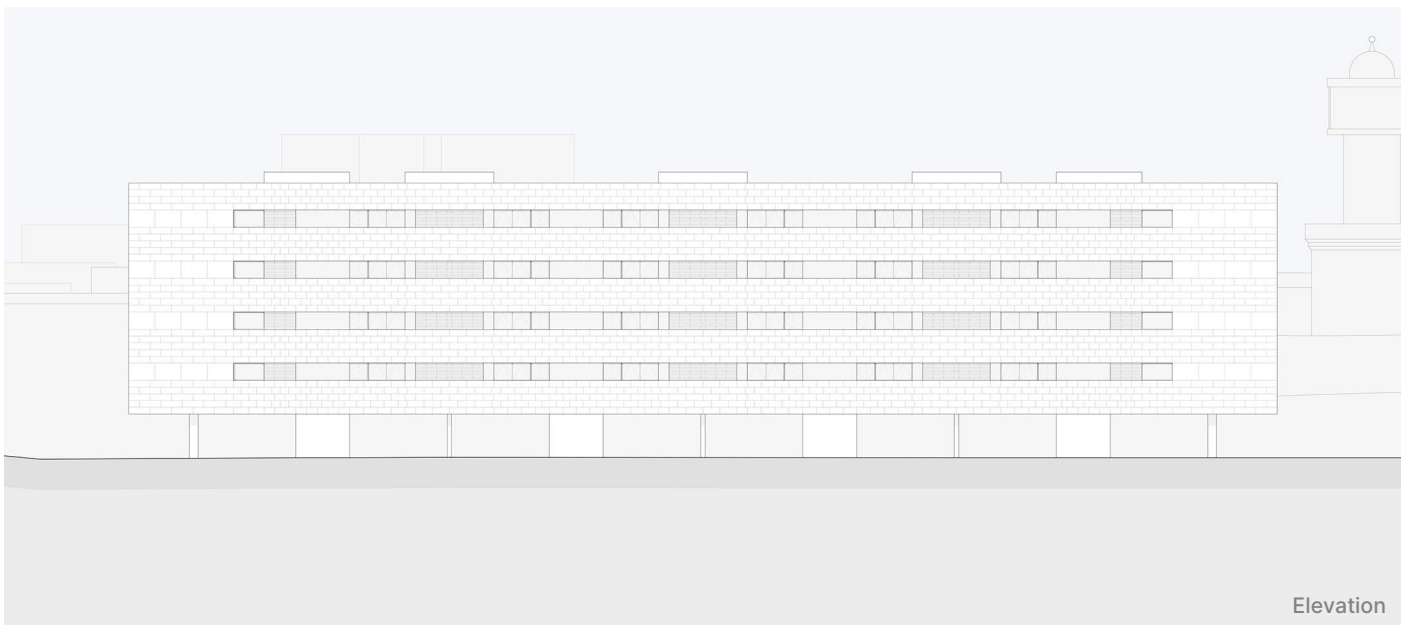
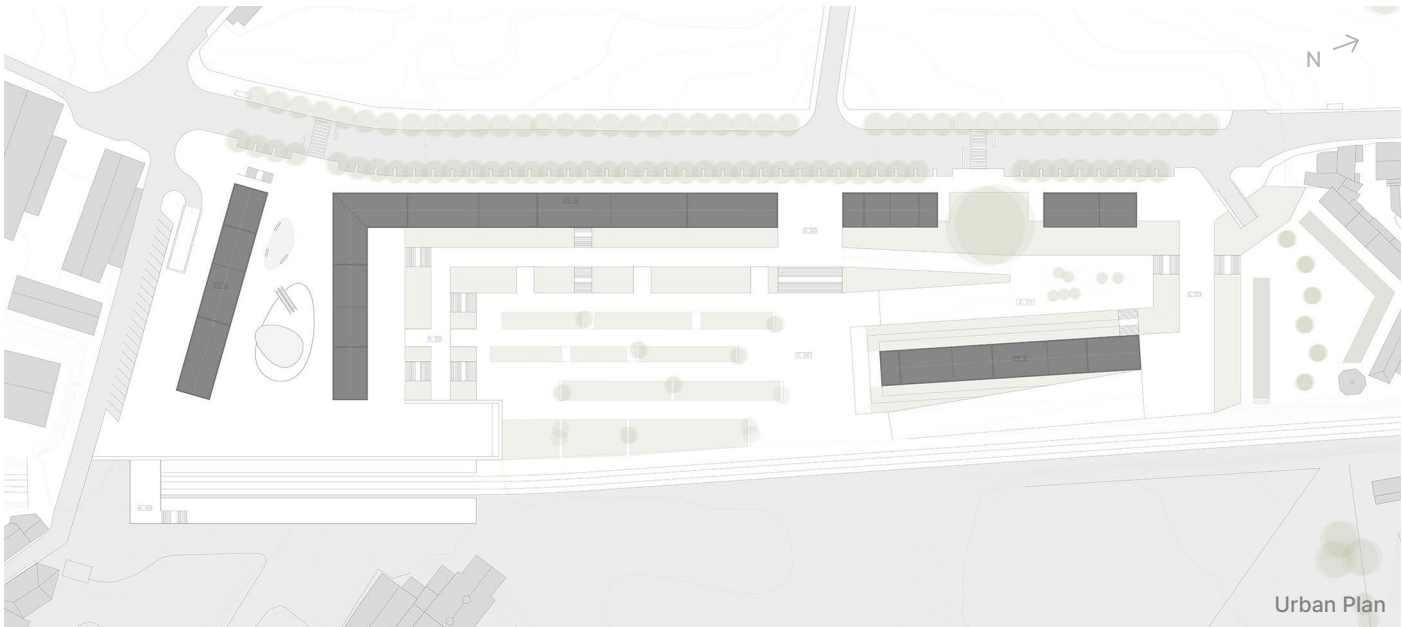
In the void shaped by the residential buildings and the railroad urban gardens and commerce arise. The commerce appears between the Road of Marvila and the space next to the railroad. The transition of quotas is treated with inclined landscaped plans, and whose interruption creates entrance opportunities to the diverse commercial spaces.

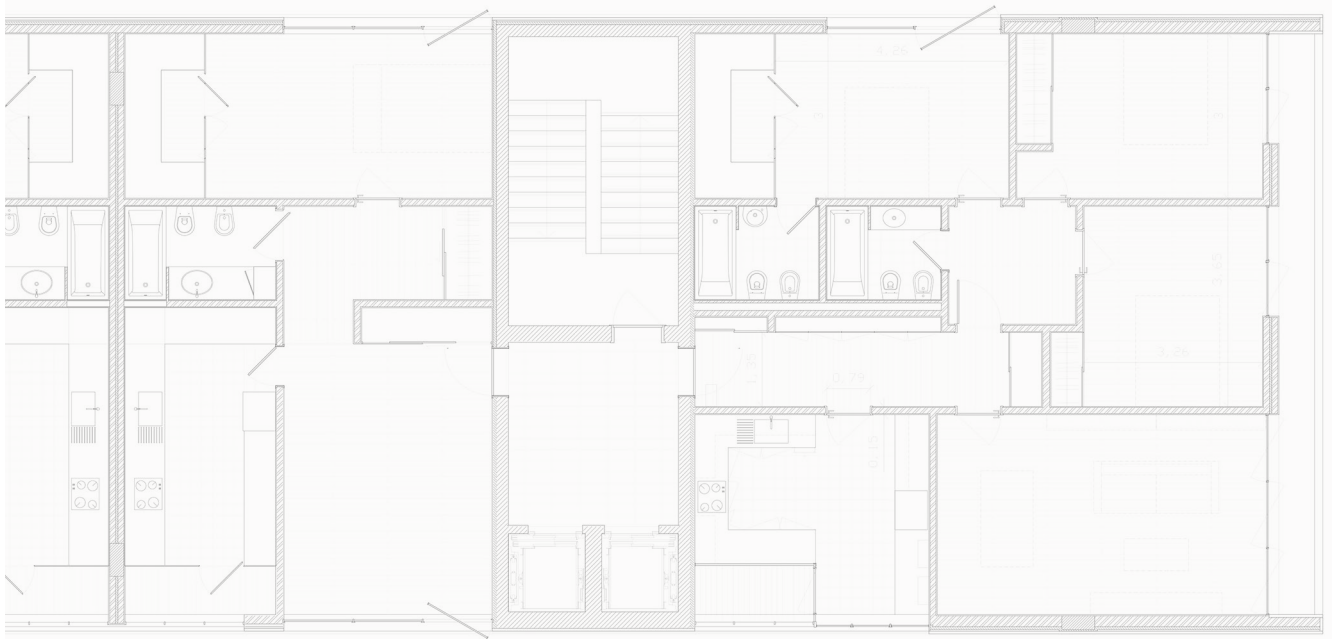
housing

urban regeneration

Lisbon







Floor Plan



architecture

project at FSSMGN

LAB A Padaria Portuguesa

Flagship store for a bakery chain in Lisbon

Photos by ©Fernando Guerra

“LAB A Padaria Portuguesa” is a unique space from the biggest bakery chain in Lisbon with more than 60 stores. This new store is dedicated to the creation and innovation of new products.

In an intervention that sought to return the original spatiality of the building and simultaneously create a laboratory concept resulted an open, an almost clinical space, reminiscent of the bakery industry of the first half of the twentieth century in Portugal.

This industrial character is recreated through the placement of divisions in wood and glass that distinguish public and private spaces making the manufacturing processes visible to the public.

The small white tile (10×10mm) that lines all the walls together with the high-strength hydraulic mosaic on the floor, unifies the space and reinforces the industrial look.

The lioz stone benches evoke the activity of kneading the bread and its continuity in the various spaces reinforces the intention to show the work and production processes.

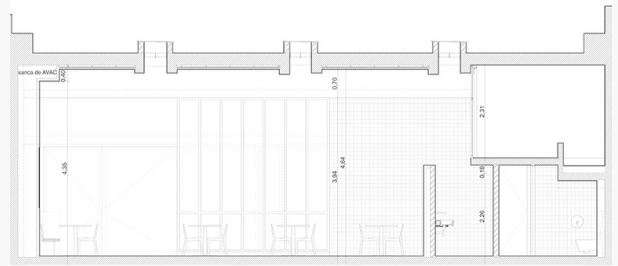
commerce

bakery

Lisbon







architecture

project at FSSMGN

Garden Restaurant & terrance

Square in
Lisbon heart

3D Visualizations by ©VPVA

Square

Lisbon

Garden

Restaurant

Among the bushes and trees of a garden near the city centre, this project defines a restaurant so deeply immersed with its surroundings, that almost seems it is not there. A true exercise in blending with the environment, while providing a very comfortable and interesting space within.

The mirror finish reflects the garden trees and the open facade with high glass doors open the interior to the terrace to enjoy the fresh garden space.

The interior space has a mezzanine with a more dining tables and a private dining room.

There are two service areas, the restaurant kitchen and the bar created to support the terrace.





architecture

public competition at FSSMGN – 2nd place

National Museum of Resistance and Freedom

Renovation of fortress and former prison

3D Visualizations by ©VPVA

museum

competition

resistance

freedom

peniche, portugal

The Fortaleza de Peniche witnessed a politic annihilation of the public space through the dictatorship (Salazarism).

The architectural intervention bases itself on the maintenance of the main existing structures, identifying their adequacy and proposing the necessary changes in order to adapt it as a Museum. Whenever possible, the elements that characterize the different spaces of the fortress and the prison were preserved, searching not only the preservation of its constructions, but also their environment and inner memories, in order to keep its patrimonial value.

The museography concept foresees an intervention based on sound, light and image, using the projection of videos and photographs, adjusting the brightness of spaces and reproduction of sounds, voices and echoes.

The Political Prisoners' Memorial takes shape as a ramped structure, with a human scale, that forms an intimate and confined course, which has engraved in its interior walls the names of the political prisoners.









joaopedrogoncalves.com

2019